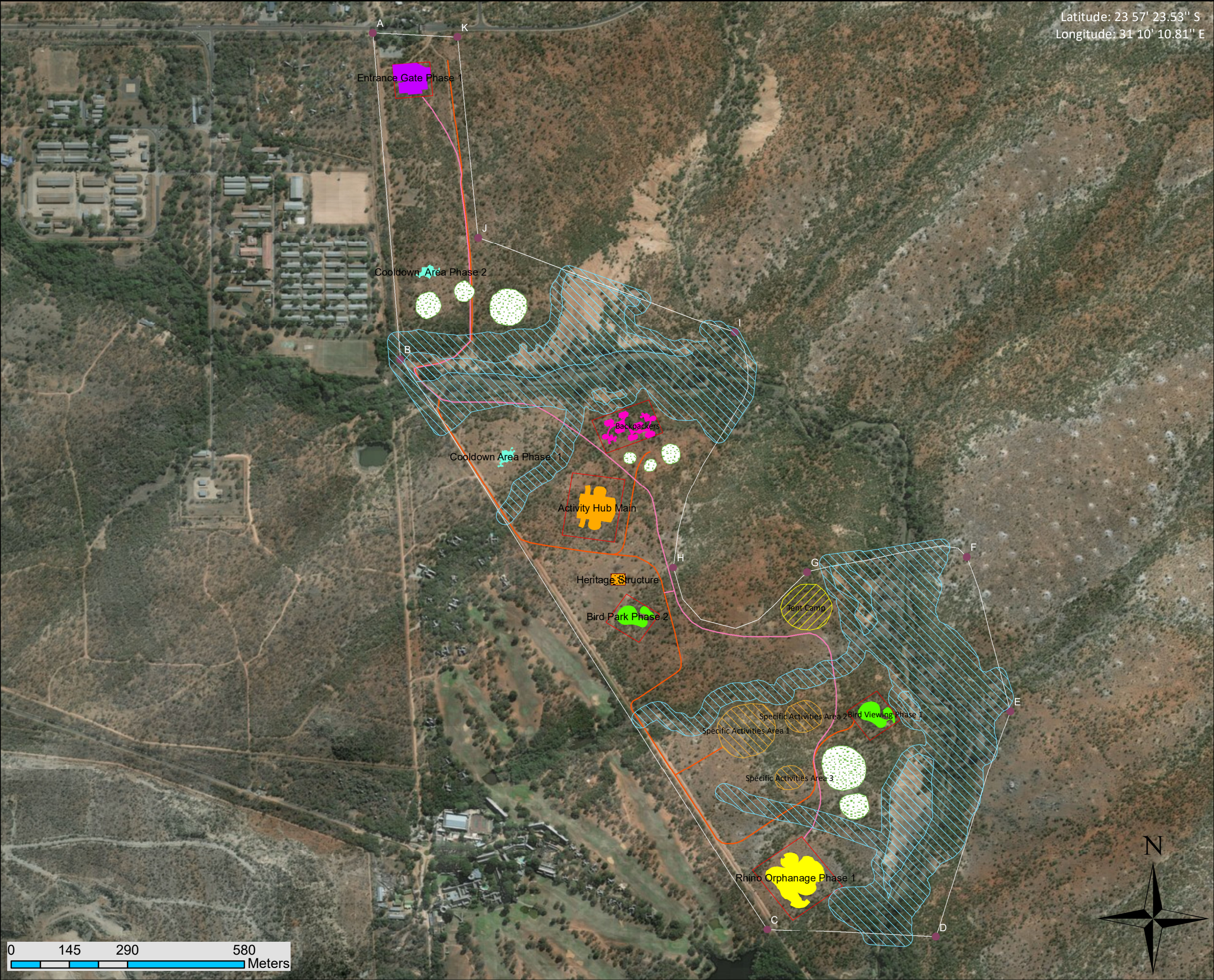


Proposed Development of the Phalaborwa Wildlife Activity Hub, Kruger National Park, Limpopo Province (Preferred Layout).

Latitude: 23 57' 23.53" S  
Longitude: 31 10' 10.81" E



Layout Map:  
Phalaborwa KNP

- Legend**
- x3 BufferPoly
  - Tent Camp
  - Bird Viewing Phase 1
  - Development Footprint
  - Backpackers
  - Backpackers development Footprint
  - Activity Hub Main
  - Activity Hub Development Footprint
  - Bird Viewing Area Phase 2
  - Bird Phse 2 Footprint
  - Entrance Gate Phase 1
  - Entrance Development Footprint
  - Rhino Orphanage
  - Orphanage Development Footprint
  - Cool Down Area 1
  - Cool Down Area 2
  - Specific Activities Area
  - Public Area 1
  - Public Areas
  - Heritage Structure
  - Footpaths
  - Golfcart Route
  - Corner A
  - Corner B
  - Corner C
  - Corner D
  - Corner E
  - Corner F
  - Corner G
  - Corner H
  - Corner I
  - Corner J
  - Corner K
  - Development Footprint

DATUM: WGS 84/UTM S36  
PROJECTION: GEOGRAPHIC  
DATE: FEBRUARY 17  
SCALE: 1:9 000

Prepared by:



Prepared for:

