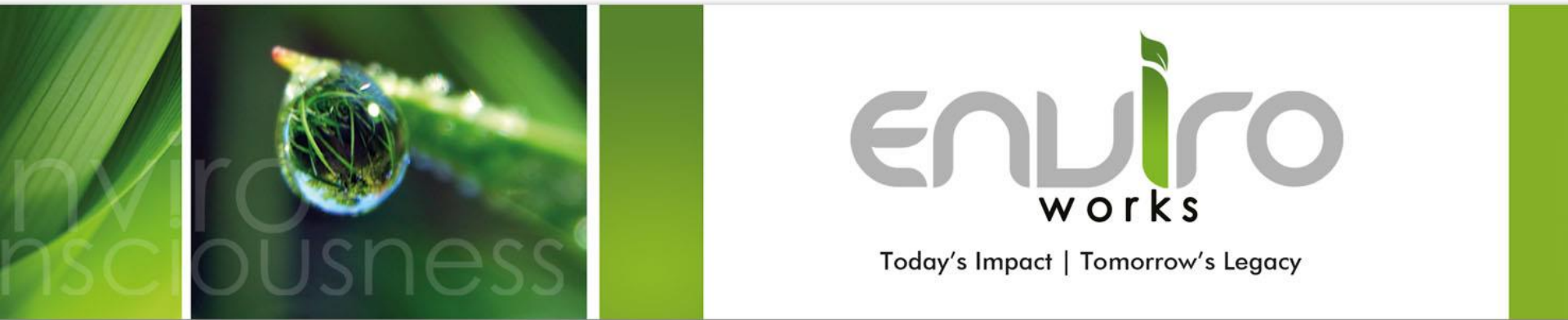


# PROPOSED DEVELOPMENT OF THE PHALABORWA WILDLIFE ACTIVITY HUB, KRUGER NATIONAL PARK.



Cajori Hotel  
29 June 2017 @ 18:00

# AGENDA

- Welcome & Introduction
- Environmental Legislation and Process
- Background & Discussion
- Q & A
- Way Forward

# Welcome & Introduction

- Organs of State
- Interested and Affected Parties

## Introduction:

- Mr James Daniels – Project Manager (SANParks Business Development Unit)
- Ms Esther Howard – Environmental Officer (SANParks Special Projects & Infrastructure)

## enviroworks

presentation

- 
- The diagram illustrates a horizontal line with a pink shaded region below it. The line is composed of several segments, some of which are labeled  $ct$ . The pink region is also labeled  $ct$  in several places.

# Environmental Legislation and Process

- Listed Activities
  - GN R. 326: Purpose of Regulations

“

ct

ct

ct

ctct

ct

ct

ct

ctct

ct ct

ct

ct

ct

ct ct

ct

ct

ct

ct

ct

ct

ct

ct

ct

ct

ct

ct

ct

ct

ct

# Environmental Legislation and Process

- Listed Activities (Continue)
  - GN R. 327
    - Activity 12
    - Activity 19
    - Activity 27

## enviroworks

presentation



# Environmental Legislation and Process

- Listed Activities (Continue)
  - GN R. 324
    - Activity 6
    - Activity 12
    - Activity 14
    - Activity 17

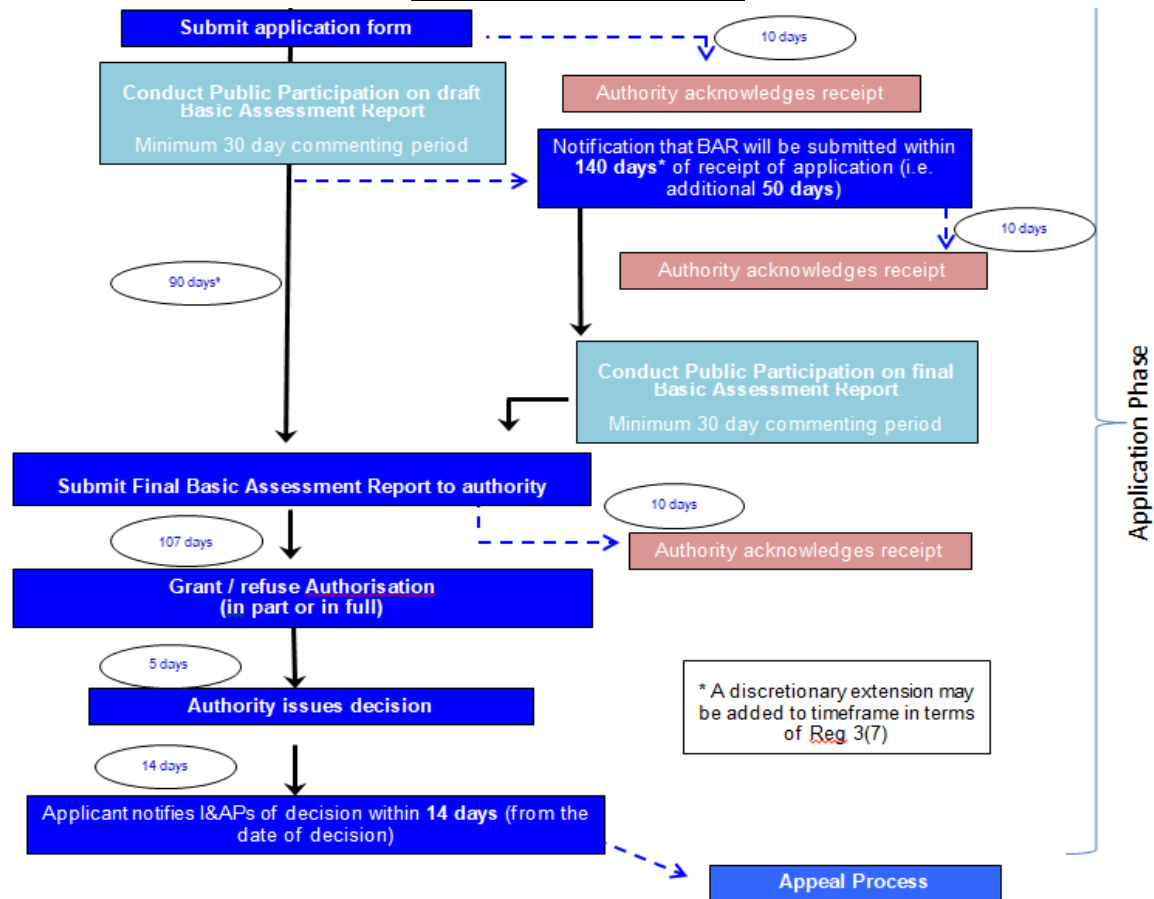


# Environmental Legislation and Process

- National Heritage Resources Act
  - Section 38 (1)
    - (c) Any development or other activity which will change the character of the site:
      - (i) exceeding 5000 square metres in extent.
- National Water Act
  - Section 21
    - (c) Impeding or diverting the flow of a watercourse
      - (i) Altering the bed, banks, course of a watercourse



# Environmental Legislation and Process



# Phalaborwa Activity Hub

## What it is not



- A development that aims to be in competition with local businesses;
- A self centred development;
- SANParks the main beneficiary; and,
- A huge impact intensive development.

# Phalaborwa Activity Hub

## What it is



- A way to address guests requirements without changing SANParks' core tourism product;
- A valuable addition to the town of Phalaborwa; and,
- Job opportunities through activities.

# Phalaborwa Activity Hub

## What it is



- SMME development; and,
- Tourism enabler – centralized but open ended.

# Background and Discussion

- Background to the Phalaborwa Wildlife Activity Hub: How did the development come about?
  - Product development workshop -> window of opportunity across all parks (referrals plus new products)
  - Many requests – what else is there to do? Diversification of product to ensure sustainability



# Background and Discussion

- Background to the Phalaborwa Wildlife Activity Hub: How did the development come about? (CONT)
  - Adventure tourism market growing
  - Backpackers market under utilized
  - Showcasing of South African products (cuisine, crafts, etc) under-utilized





# Background and Discussion

- Background to the Phalaborwa Wildlife Activity Hub: Objective of the Activity Hub
  - Job creation
  - Sustainable income stream (additional – grant funding to SANParks reduces)
  - Market differentiation
  - Provide alternative products without influencing / affecting traditional product within park – situated on periphery of the park





# Background and Discussion

- Background to the Phalaborwa Wildlife Activity Hub: Objective of the Activity Hub (CONT)
  - More products = longer stay = beneficial to park
  - Interpretation lacking (as per customer feedback) – opportunity for this
  - Showcase green development



# Background and Discussion

- Site Selection Criteria – why site was chosen
  - Various parks looking at activity hubs
  - Periphery of the park optimal
  - Access into park / gate within town of Phalaborwa makes this ideal
  - Market from within and from outside
  - Phalaborwa offers additional diverse products – centralize logistics



# Background and Discussion

- Site Selection Criteria – why site was chosen (CONT)
  - Over last 2 years ave of 177 cars per day through Phalaborwa gate – provides solid base together with established town with tourism culture
  - Mining versus conservation – view of both



# Background and Discussion

- Socio Economic details of the Development
  - SANParks' Model: Commercial opportunities to include benefit share with land claimants and local communities
  - Jobs created (including management positions) to include land claimants and local communities
  - FNB initiative – training and funding of entrepreneurs



# Background and Discussion

- Benefits for Phalaborwa and the Community
  - Various SMME products (archery, food prep, leather making, indigenous games, beading, wire works, Shebeen tours, SPA, micro light flights, shows, i.e. reptile shows, mountain bike rentals, astronomy talks, game drives, etc)
  - Share in larger, capital intensive products
  - Multiplier effects as a result of the attraction (growth of tourism numbers to the north)



# Background and Discussion

- Nine Hubs include:
  - Activity Hub Main Building
  - Backpacker Facilities
  - Two Bird Viewing Areas
  - Two Cool Down Areas
  - Rhino Orphanage
  - Entrance Gate
  - Eight Public Areas
  - Specific Activities Area
  - Tent Camp



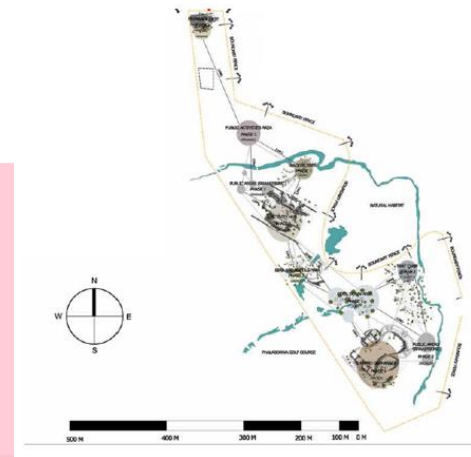
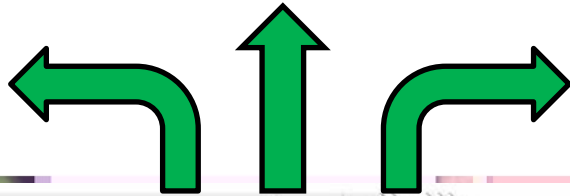


# Background and Discussion



## Outside:

- Game viewing
- Day tours (to various destinations)
- Cultural tours
- Shebeen visits
- Mine tours
- Local crafts
- Micro light flights from the airport



# Background and Discussion

Cool down area

Rhino orphanage

Hub:

- Restaurant
- Stalls
- Exhibition
- Shows

Bird view

Braai area

Backpackers

WAITING AREAS

KEY WORDS:

- Universal Access
- Natural Materials
- Relaxation
- Interaction
- Connecting



Artistic Impression of Waiting Area



Artistic Impression of Waiting Area

Tented camp



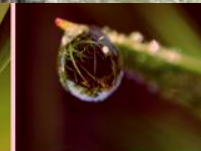
# Background and Discussion

- Activity Hub include:
  - Eight Kiosk Shops
  - Two Takeaway Restaurants
  - One Ice Cream Shop
  - One General Shop
  - An Information Centre
  - Two Admin Offices
  - A Sit Down Restaurant
  - Ablution Facilities
  - Six Braai Areas
  - An Amphitheatre
  - A Lobby



# Background and Discussion

- Backpacker Facilities:
  - Six Backpacker Facilities (72 tourists in total)
  - Six Braai Areas
  - Two Kitchen Areas
- Bird Viewing Areas
  - Ablution Facilities
  - Two Viewing Containers
  - A Drop-off Area
- Two Cooldown Areas
  - Two Water Fountains
  - Ablution Block
  - Six Braai Areas
  - Three Cooldown Spray Areas



# Background and Discussion

- Rhino Orphanage:
  - Two Waiting Areas
  - An Amphitheatre
  - Six Viewing Containers
  - A Veterinary Clinic Area
  - An Office and Information Centre
  - Security Room
- Eight Public Areas:
  - Braai Areas
  - Picnic Sites
  - Ablution Facilities



# Background and Discussion

- Entrance Gate:
  - A Parking Area (49 car and 5 Bus Bays)
  - A Security Office and Two Boom Gates
  - An Information Centre
  - Reception Area
  - Two Admin Offices
  - Ablution Facilities
  - Golf Cart Parking
  - Public Seating
  - Public Waiting Area



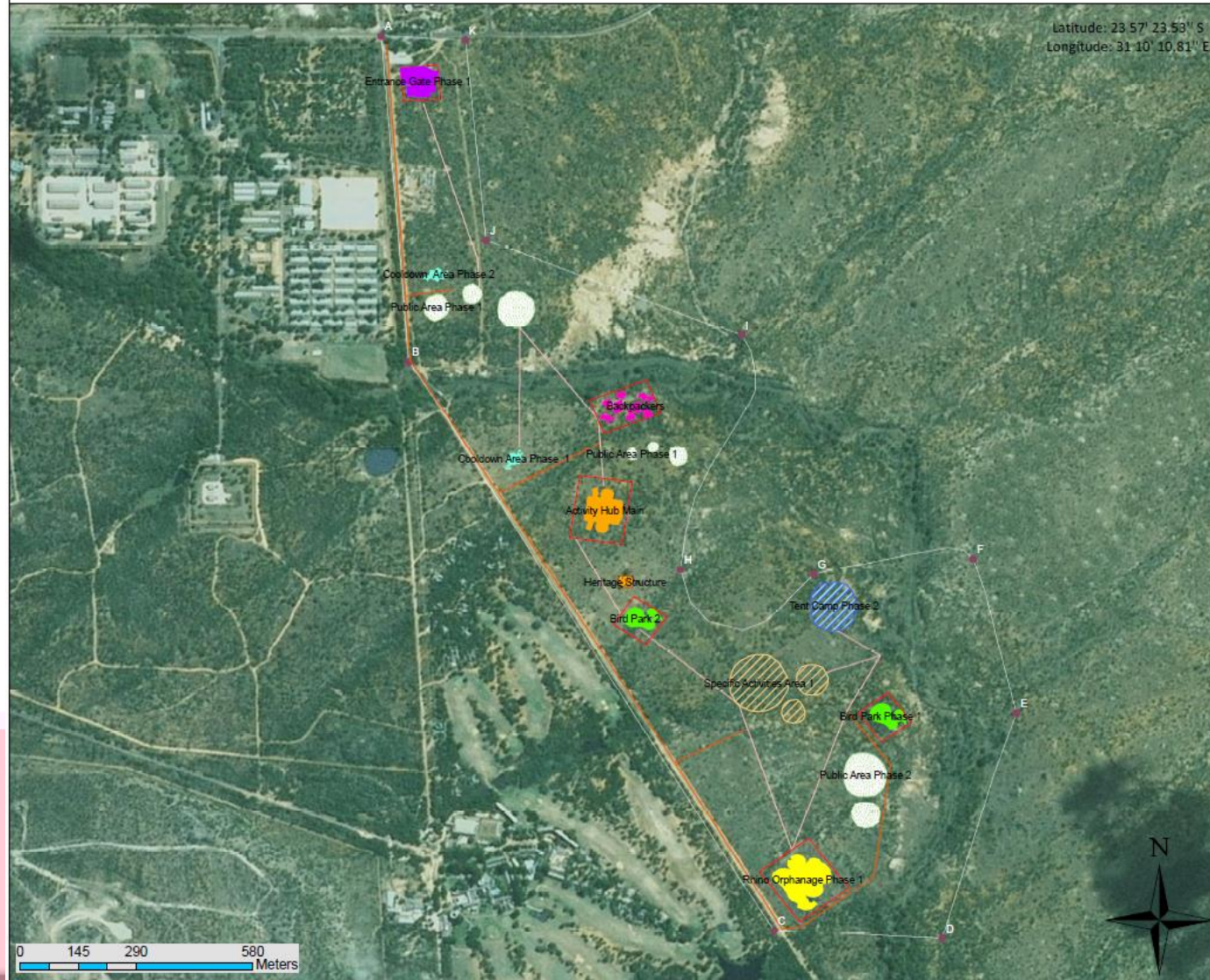


# Background and Discussion

- Specific Activities Area (to be finalised)
  - Hot Air Balloon Activity (anchored)
  - Archery Activities
  - Game Drives
  - Restaurants
  - Entertainment Areas
  - Spa's
- Tent Camp
  - Tent Camping Area
  - Six Braai Areas
  - Two Ablution Facilities



Proposed Development of the Phalaborwa Wildlife Activity Hub, Kruger National Park, Limpopo Province (Layout Alternative).



# Q & A

# Way Forward

- Pre-Application Public Participation to commence on 29 June 2017
- Submit comments to the EAP before 31 July 2017
- EAP to submit Application Form to DEA
- Initial Public Participation Process to be conducted
- Submit Final Basic Assessment Report to DEA
- Environmental Authorisation
- Notify all Interested and Affected Parties of the Appeal Process.





# Thank you

Christoff du Plessis

021 853 0682

082 495 2673

[christoff@enviroworks.co.za](mailto:christoff@enviroworks.co.za)